

Reconnecting A Disconnected Hard Drive



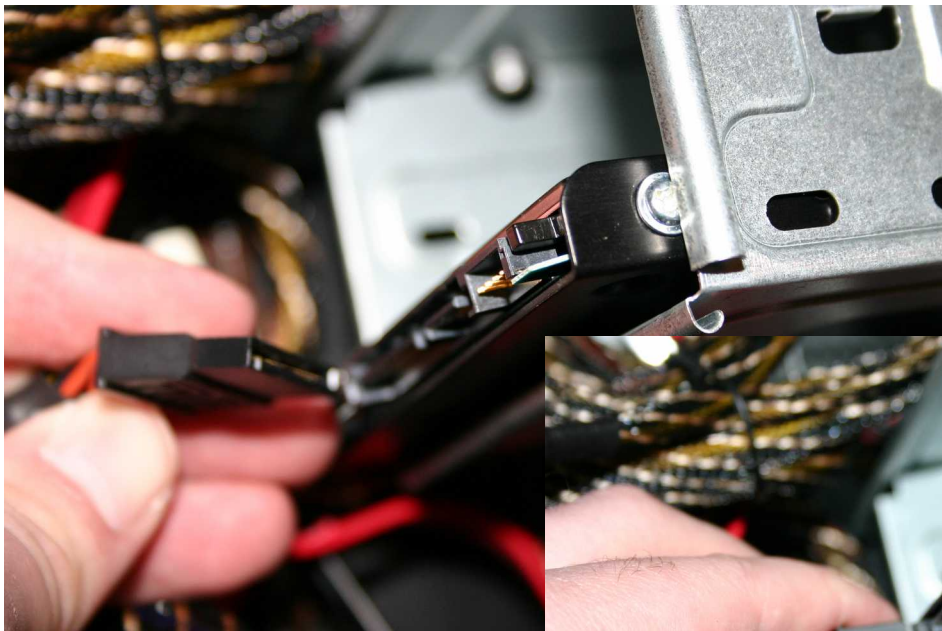
Turn the computer to face the back. Unscrew the two screws on the right where the red arrows point.

Then remove the side panel so you can access the inside of the system.

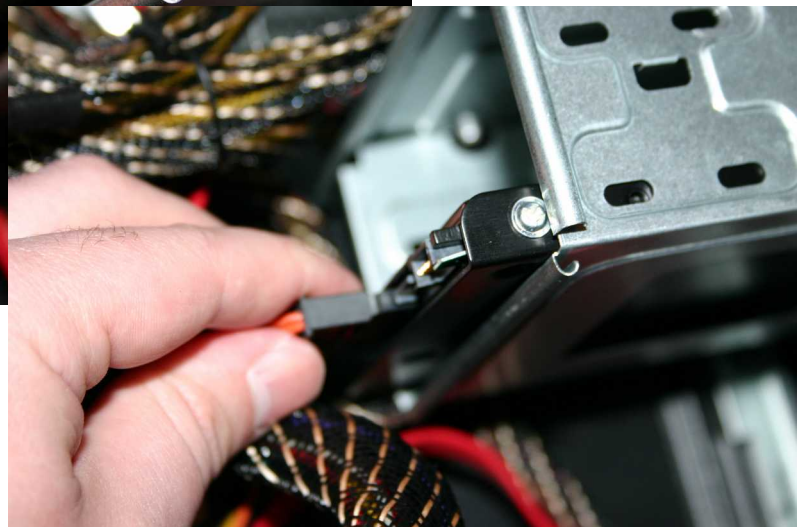


Identify the power supply connector for a SATA hard drive.

It looks like the image on the left.

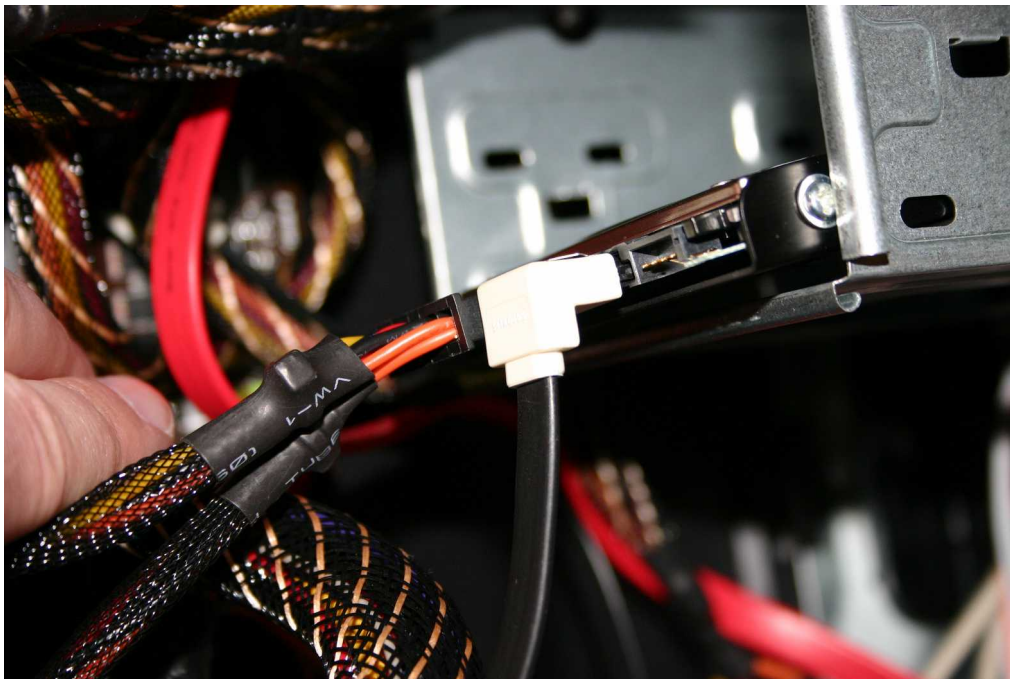


Identify the hard drive and connect the power supply connector to the hard drive.



The image to the right is what it should look like when the power supply connector is connected to the hard drive.

Identify the SATA
cable and connect it.



When everything is
firmly and properly
connected here is what
it should look like.